

BRAND NEW CUSTOM HOME

CHERRY RIDGE – WEAVERVILLE

PRICED TO SELL - \$ 439,000

4 Bedrooms, 3 Full Baths, 3295 Htd SF on Full Basement with 1.71 Acre Lot

1ST QUALITY ARTS & CRAFTS WITH HIGH-END FEATURES AND UPGRADES. FIBER CEMENT SIDING AND NATIVE STONE EXTERIOR.

PROPERTY DESCRIPTION: 1-Story with full walk-out basement and 2-car garage on the entry level. Open floor plan with **ALL MAIN LEVEL LIVING AREAS** including the master suite, large bright kitchen with breakfast bar and island, walk-in pantry, dining room, great room with fireplace, bedrooms 2 and 3 and additional full bath. A walk-in laundry room is located on the main level for your convenience. The lower level includes a large 4th bedroom with windows, full bath, laundry #2, walk-in closet, and over 1300 SF for future expansion.

FEATURES:

APPLIANCES: All major brand stainless steel gas range, oven, dishwasher, microwave, and refrigerator.

HEATING: Electric, Forced Air, Heat Pump

COOLING: Central, Electric, Heat Pump

STREETS: Paved to DOT Standards with Arts & Crafts style Street Lights

FLOORS: Hardwoods, Ceramic Tile, Carpet

EVEN MORE INTERIOR FEATURES: Ceiling Fans, Walk-In Closets, finished bright loft area overlooking the soaring ceilings below, plus an 18 x 10 unfinished bonus/office/play room on level 2.

FULL BASEMENT: Includes 746 SF of heated living space as described above, inside/outside entrance onto a covered deck, and over 1300 SF for future expansion.

LOT DESCRIPTION: Green Area, Mountain Views, Paved Frontage, Wooded, Private Driveway

OTHER: Architectural Shingles, Large Wrap-Around Covered Decks, Private Well, and Septic.

MLS 455204

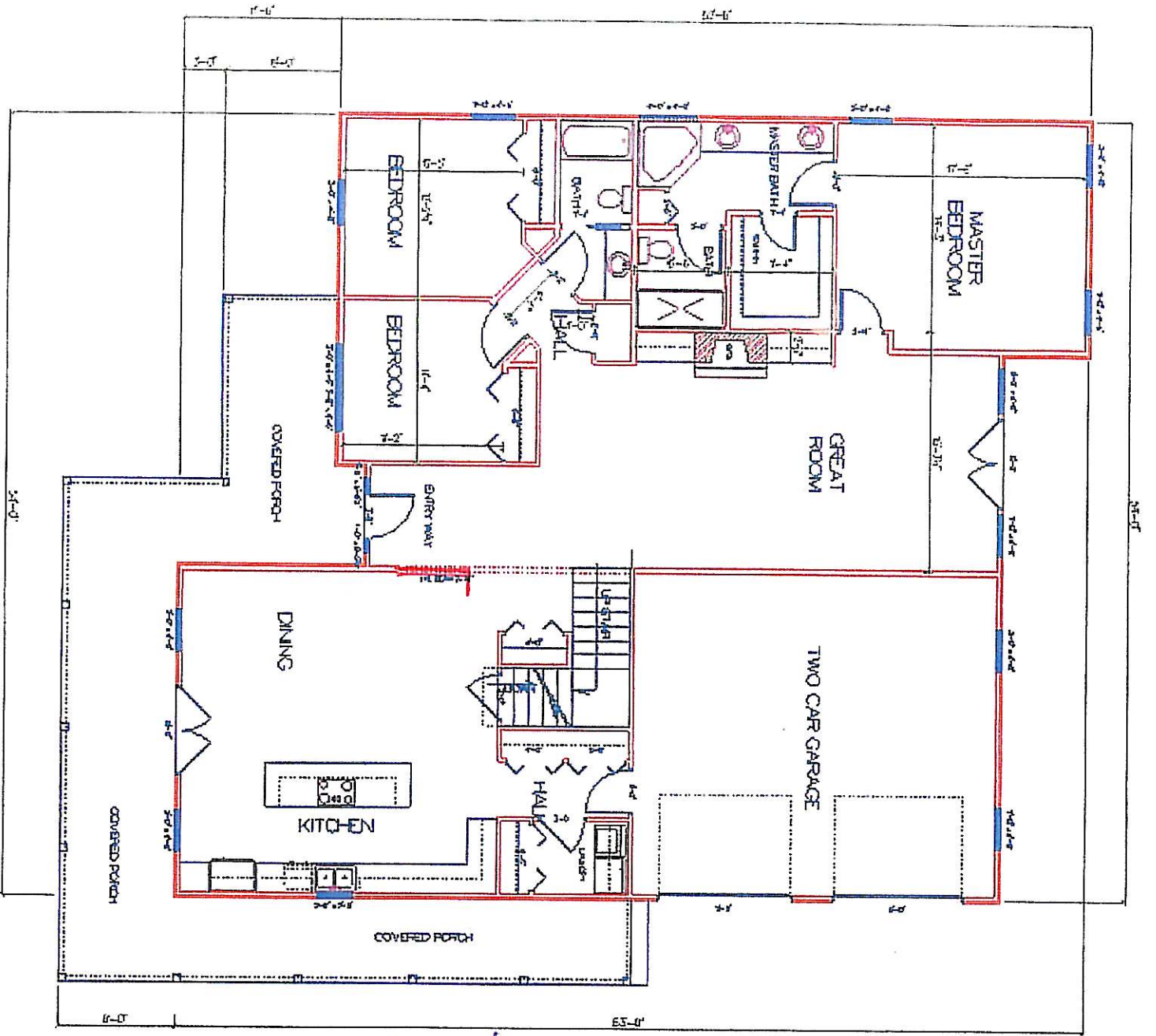
Note: Above is subject to change without notice.

Beverly-Hanks & Associates

Richard Smith – REALTOR/Broker Associate

Mobile Number 828-551-8222

wrsmith@beverly-hanks.com



LEVEL 2:
 NOTE: 300 SF
 LOFT AREA ABOVE
 KITCHEN AND DINING
 + 180 SF BONUS ROOM.

